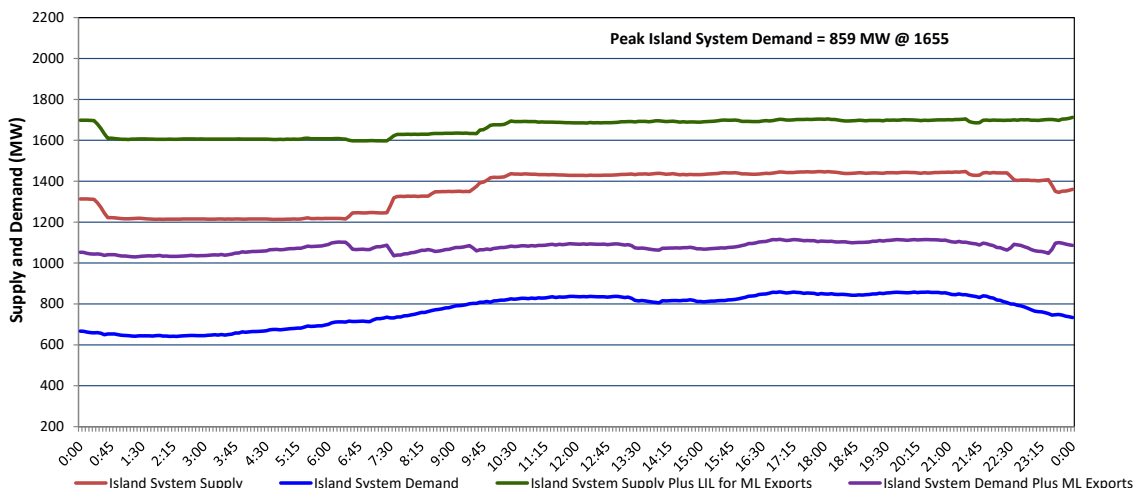


Newfoundland Labrador Hydro (NLH) Supply and Demand Status Report Filed Monday, June 08, 2026

Section 1 Island Interconnected System - Supply, Demand & Exports Actual 24 Hour System Performance For Sunday, June 07, 2026



Island Supply Notes For June 07, 2026

- A As of 1326 hours, February 05, 2026, Cat Arm Unit 2 available at 57 MW due to forced derating (67 MW).
- B As of 0800 hours, March 29, 2026, Holyrood Unit 3 unavailable due to planned outage (150 MW).
- C As of 1513 hours, April 16, 2026, St. Anthony Diesel Plant available at 7.7 MW due to forced derating (9.7 MW).
- D As of 0800 hours, May 06, 2026, Holyrood Unit 2 unavailable due to planned outage 40 MW (170 MW).
- E As of 1052 hours, May 06, 2026, Bay d'Espoir Unit 1 unavailable due to planned outage (76.5 MW).
- F As of 1052 hours, May 06, 2026, Bay d'Espoir Unit 2 unavailable due to planned outage (76.5 MW).
- G As of 0701 hours, May 24, 2026, Holyrood Unit 1 unavailable due to planned outage 166 MW (170 MW).
- H As of 0841 hours, May 24, 2026, Hinds Lake Unit unavailable due to planned outage (75 MW).
- I As of 1241 hours, May 27, 2026, Stephenville Gas Turbine available at 25 MW due to forced derating (50 MW).

Section 2 Island Interconnected System - Supply, Demand & Outlook

| Mon, Jun 08, 2026 | Island System Outlook ² | Seven-Day Forecast | Island System Daily Peak Demand (MW) | |
|--------------------------------------------|------------------------------------|--------------------------|--------------------------------------|-----------------------|
| | | | Forecast ⁸ | Adjusted ⁵ |
| Island System Supply: ⁴ | 1,555 MW | Monday, June 8, 2026 | 920 | 870 |
| NLH Island Generation: ^{3,7} | 940 MW | Tuesday, June 9, 2026 | 910 | 860 |
| NLH Island Power Purchases: ⁵ | 115 MW | Wednesday, June 10, 2026 | 850 | 800 |
| NP and CBPP Owned Generation: | 215 MW | Thursday, June 11, 2026 | 920 | 870 |
| LIL/ML Net Imports to Island: ⁹ | 285 MW | Friday, June 12, 2026 | 930 | 880 |
| | | Saturday, June 13, 2026 | 925 | 875 |
| 7-Day Island Peak Demand Forecast: | 930 MW | Sunday, June 14, 2026 | 865 | 815 |

Island Supply Notes For June 08, 2026

- Notes:
1. Generation outages for running and corrective maintenance are included. These are not unusual for power system operations. They generally do not impact customer supply. Hydro schedules outages to system equipment whenever possible to coincide with periods when customer demands are low and sufficient supply reserves are available. However, from time to time equipment outages are necessary and reserves may be impacted.
 2. As of 0800 Hours.
 3. Gross continuous unit output.
 4. Gross output from all Island sources (including Note 3).
 5. NLH Island Power Purchases include: ML Imports, Exploits Generation, Rattle Brook, Star Lake, Wind Generation and capacity assistance (when applicable).
 6. Adjusted for interruptible load and the impact of voltage reduction when applicable.
 7. Due to limitations inherent in the design of combustion turbines, the output of combustion turbines may be reduced in the event that ambient temperatures exceed the threshold required for full rated output. This threshold is dependent on the design of each turbine.
 8. Does not include ML Exports.
 9. LIL Import sunk in the Island System. Actual LIL flows will be restricted by various system conditions including, but not limited to, Island Load, ML Exports and Avalon Unit status.

Section 3 Island Peak Demand and Exports Information Previous Day Actual Peak and Current Day Forecast Peak

| | | | |
|-------------------|----------------------------------|-------|-----------|
| Sun, Jun 07, 2026 | Island Peak Demand ¹⁰ | 16:55 | 859 MW |
| | Exports at Peak | | 257 MW |
| | LIL Net Imports to Island | | 3,688 MWh |
| Mon, Jun 08, 2026 | Forecast Island Peak Demand | | 920 MW |

- Notes:
10. Island Demand is supplied by NLH generation and purchases, LIL Imports plus generation owned and operated by Newfoundland Power and Corner Brook Pulp & Paper (Deer Lake Power, DLP).